

Sharpsmart:

Size and Location: Impact on Sharps Injuries

Authors Grimmond T and Naisoro W

Publication Journal of Infection Prevention

2014;15 (5): 170-174

“Compared to small portable Sharps Containers, use of the larger, safety-engineered Sharpsmart mounted on patient room walls can result in significantly fewer staff sustaining disposal-related SI annually. The Sharpsmart collectors’ volume, large aperture, passive overfill protection, one-hand deposit and close-at-hand siting are postulated as contributing to the reduction in disposal-related Sharps Injuries” - Authors

What was the study?

A 350-bed Sydney hospital was experiencing excessive Container-Associated Sharps Injuries (SI) with their use of a small disposable sharps container.

The study **‘A 6-year, 3-phase study comparing use of a small patient-room sharps disposal container with a larger engineered container’** examined the impact of converting from a small patient room disposable sharps container to the Daniels Sharpsmart reusable collector.

Phase 1: Disposable 1.4Litre containers were carried to/from patient rooms.

Phase 2: 32Litre reusable Sharpsmart collectors were mounted in med-rooms with sharps carried to/from patient rooms in dishes.

Phase 3: Sharpsmarts were wall-mounted in patient rooms.

What were the results?

Phase 1: (Non-Sharpsmart disposable containers)

- 19.4% of SI were container-related

Phase 2: (Sharpsmarts in Med rooms)

- Container-Associated SI fell 94.9%
- Disposal related SI fell 71.1%
- Transport injuries rose

Phase 3: (Sharpsmarts in patient rooms)

- Container-Associated SI were zero
- Disposal-related SI fell 83.1%
- Recapping SI fell 85.1%.

What does this mean for you?

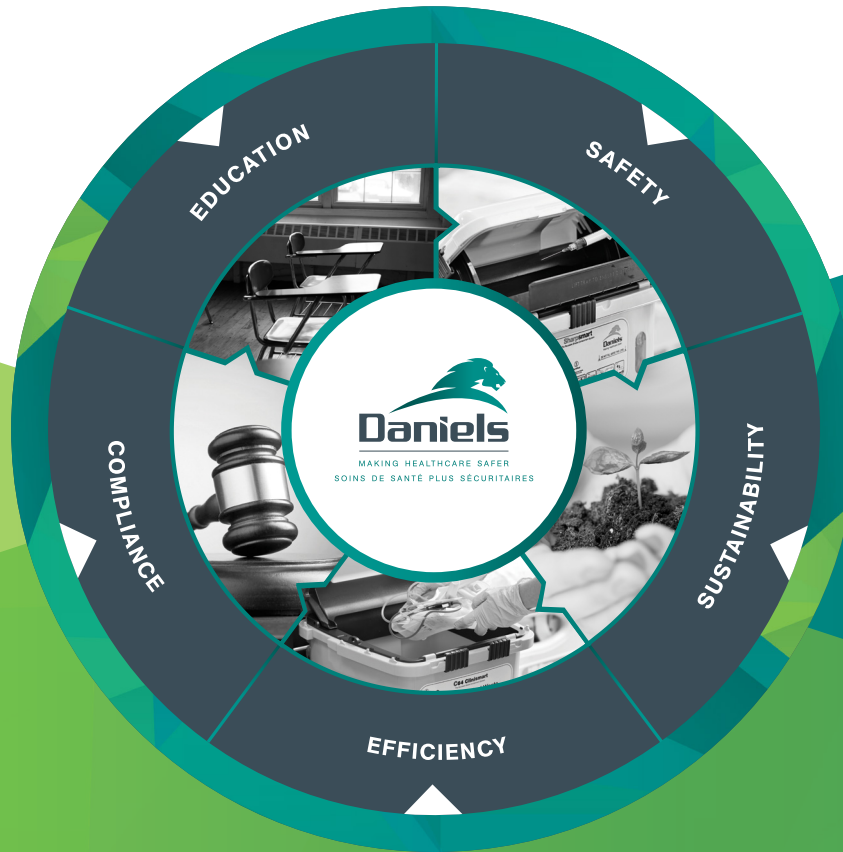
The study validates the necessity of the international recommendations that sharps be placed immediately after use into safety engineered sharps collectors located close to the point of sharps generation.

Use of patient-room Sharpsmarts can significantly reduce Sharps Injuries.



“Peer review is the critical assessment by experts, of manuscripts submitted to journals... unbiased, independent, critical assessment is an intrinsic part of all scholarly work.”

International committee of Medical Journal editors



The Daniels Difference

Healthcare Waste Management cost efficiencies are derived from the successful deployment of five key elements. At Daniels Health we work closely with our customers to ensure that all healthcare staff are protected, trained and equipped, that the facilities' risk profile is managed, and waste management costs are minimised.

Safety: Our highest commitment is safety; through intelligent products, systemised solutions and bespoke training, we work with our customers to reduce needlestick injuries, minimise infection transfer and provide solutions that protect the safety and minimise risk for staff and patients.

Sustainability: Our reusable products and environmentally responsible treatment services are designed to maximise segregation, reduce CO2 burden and minimise waste going to landfill. Through waste mapping, auditing and environmentally graded solutions, we work with our customers to achieve the highest green ratings.

Efficiency: Daniels Health optimises the efficiencies of healthcare environments through smart products, process re-engineering and redefined waste handling methodologies. Significantly reducing the labour used in handling of waste through point-of-use bagless containment systems, an extensive range of mounting options and accessories and logistical solutions, our customised services guarantee optimised time and movement efficiencies.

Compliance: Experts in the regulatory complexities governing the healthcare sector, we position ourselves as an astute partner delivering expert guidance and compliant solutions to our customers. All Daniels solutions are vetted against state and federal regulations and executed through waste plans and training to achieve optimised safety and compliance.

Education: Our ongoing commitment to educate staff within healthcare ensures that together we achieve greater safety awareness and drive behavioral change in waste management, segregation, compliance and best practice management. Through a blended learning approach using onsite training, a range of educational material and module-based e-learning, we ensure all healthcare staff are trained and compliance certified.

