

# Safety Engineered Devices:

## Use and activation in 6 hospitals in US West

**Authors:** Terry Grimmnd

**Publication:** J Assoc Occ Hlth Prof. Fall, 2018;38(4):14-18

**“In addition to asking, “Are we using SED frequently enough?”, we should ask, “Are we using the safest, clinically-acceptable SED available?” - Authors**

### What was the study?

The study **‘Safety engineered device usage and activation in 6 hospitals in US West’** examined the contents of Daniels Sharpsmart reusable sharps containers (RSC) to learn the practices of safety engineered device (SED) usage in five California hospitals and one Idaho hospital.

The contents were sorted into the following categories:

- Hollow-bore SED (Activatable and Non-activatable)
- Hollow-bore Non-SED
- Solid sharps and solid SED
- Non-sharp wastes

### What were the results?

Of the 435 liters of contents from 30 RSC (from 6 hospitals), there were:

- a)** 429 (21%) non-SED
- b)** 1,493 (72%) activatable SED
  - 1,442 (96.6%) were activated correctly
  - 50 (3.3%) were not activated (or partially)
  - 1 (.1%) tampered with
- c)** 167 (8%) draw-up SED

Of total hollow-bore needles:

- a)** 20.5% were not SED (12.4% capped needles, 8.1% uncapped needles)
- b)** 10.6% were discarded ‘sharp’ (i.e. uncapped/non-activated/tampered with)

These results are “significantly improved” compared to the SED Florida audit in 2013.

### What does this mean for you?

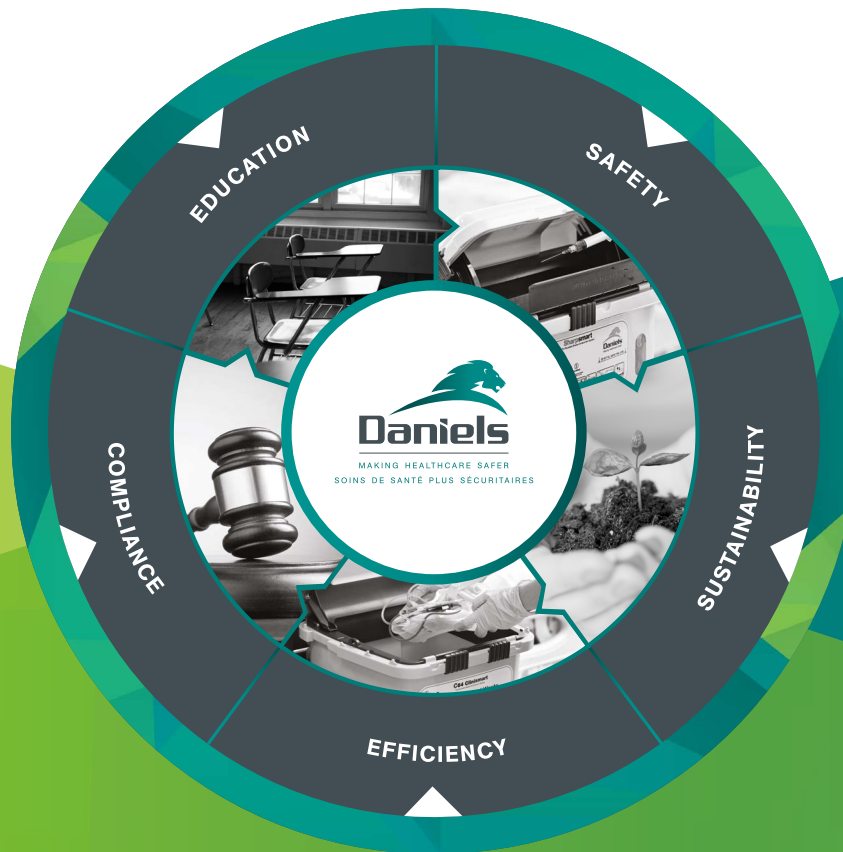
Although these numbers show great improvement, and therefore signify safer practices, the national sharps injury rate is still increasing. This could be due to rushing, fatigue, and/or stress in healthcare workers.

We should aim for a 100% SED activation rate, zero SED tampering, and non-SED usage rate of <2% of all HBN. This can be reached with more education and less user-dependent SED.

A safe sharps containment system remains an essential part of Sharps Injury prevention

**“Peer review is the critical assessment by experts, of manuscripts submitted to journals... unbiased, independent, critical assessment is an intrinsic part of all scholarly work.”**

International committee of Medical Journal editors



## The Daniels Difference

**Healthcare Waste Management cost efficiencies are derived from the successful deployment of five key elements. At Daniels Health we work closely with our customers to ensure that all healthcare staff are protected, trained and equipped, that the facilities' risk profile is managed, and waste management costs are minimised.**

**Safety:** Our highest commitment is safety; through intelligent products, systemised solutions and bespoke training, we work with our customers to reduce needlestick injuries, minimise infection transfer and provide solutions that protect the safety and minimise risk for staff and patients.

**Sustainability:** Our reusable products and environmentally responsible treatment services are designed to maximise segregation, reduce CO2 burden and minimise waste going to landfill. Through waste mapping, auditing and environmentally graded solutions, we work with our customers to achieve the highest green ratings.

**Efficiency:** Daniels Health optimises the efficiencies of healthcare environments through smart products, process re-engineering and redefined waste handling methodologies. Significantly reducing the labour used in handling of waste through point-of-use bagless containment systems, an extensive range of mounting options and accessories and logistical solutions, our customised services guarantee optimised time and movement efficiencies.

**Compliance:** Experts in the regulatory complexities governing the healthcare sector, we position ourselves as an astute partner delivering expert guidance and compliant solutions to our customers. All Daniels solutions are vetted against state and federal regulations and executed through waste plans and training to achieve optimised safety and compliance.

**Education:** Our ongoing commitment to educate staff within healthcare ensures that together we achieve greater safety awareness and drive behavioral change in waste management, segregation, compliance and best practice management. Through a blended learning approach using onsite training, a range of educational material and module-based e-learning, we ensure all healthcare staff are trained and compliance certified.

