

WASTE SEGREGATION MATRIX

BIOMEDICAL WASTE



Contained separately in a biohazard bag labeled with the words "Biohazardous Waste" or with the international biohazard symbol.

ANATOMICAL WASTE



Containers shall be labeled "Anatomical Waste" and shall be segregated from other red bag waste. Only single use packaging is approved for Anatomical Waste.

SHARPS



All used sharps capable of cutting or piercing the skin (except those contaminated with chemo).

CHEMO WASTE (TRACE)



Waste that is contaminated through contact with chemotherapeutic agents.

PHARMACEUTICAL WASTE



Includes all pharmaceuticals that are not required to be denatured in accordance with applicable guidelines. Does not include any chemotherapy medications.

CONTROLLED SUBSTANCES



Includes all narcotics and controlled substances regulated through Health Canada that require denaturing prior to shipment and disposal.

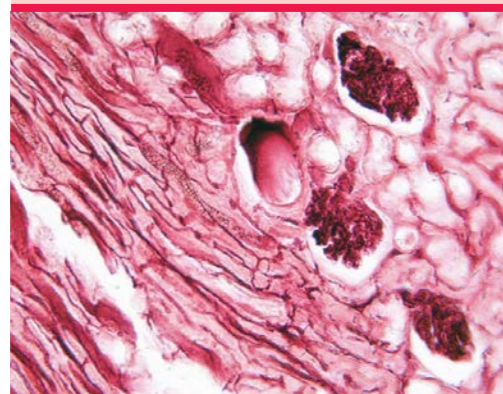
REGULAR WASTE



RECYCLABLE WASTE



Blood tubing/bags/hemovac/pleuravacs



Biopsy Material



Needles / Syringes



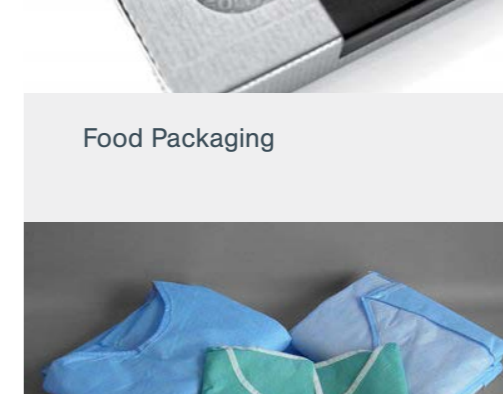
Tubing and empty bags



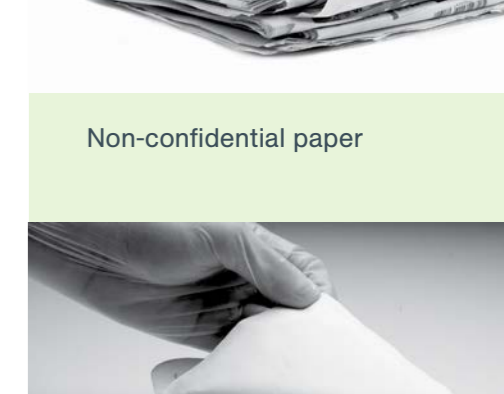
Broken Ampoules and Vials



Pills with controlled substances



Food Packaging



Non-confidential paper



Suction canisters or liners with bloody fluid or OPIM



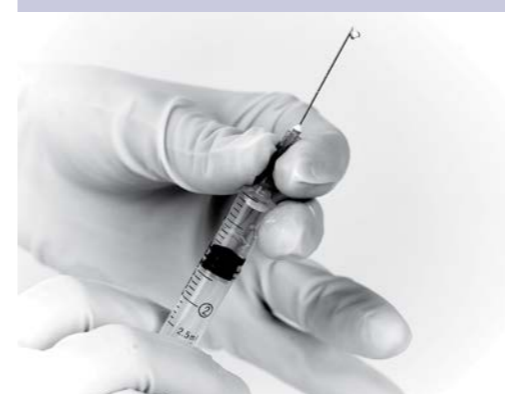
Anatomical Parts



Glass Slides



Needles / Syringes



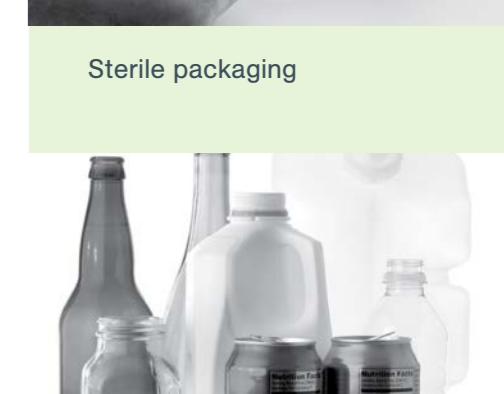
Syringes with residual meds that have not come in contact with blood or body fluids.



Patches containing controlled substances or narcotics



Chux/underpads and disposable patient items



Sterile packaging



All disposable items soaked or dripping with blood or other body fluids



Anatomical Organs



Blades



Masks and gowns



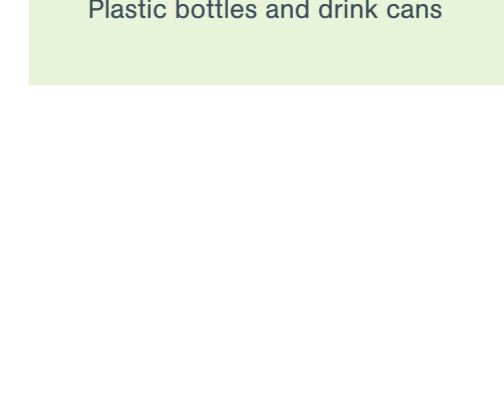
IV bags with residual meds



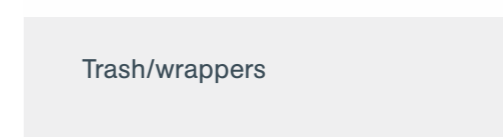
Liquid form of controlled substances or narcotics (Liquids to be placed in the liquids cartridge)



Non Infectious Gloves



Plastic bottles and drink cans



Trash/wrappers