

Waste Segregation Matrix

BIOMEDICAL WASTE



Contained separately in a biohazard bag labeled with the words "Biohazardous Waste" or with the international biohazard symbol.



Blood tubing / bags / hemovacs / pleuravacs



Suction canisters or liners with bloody fluid or OPIM

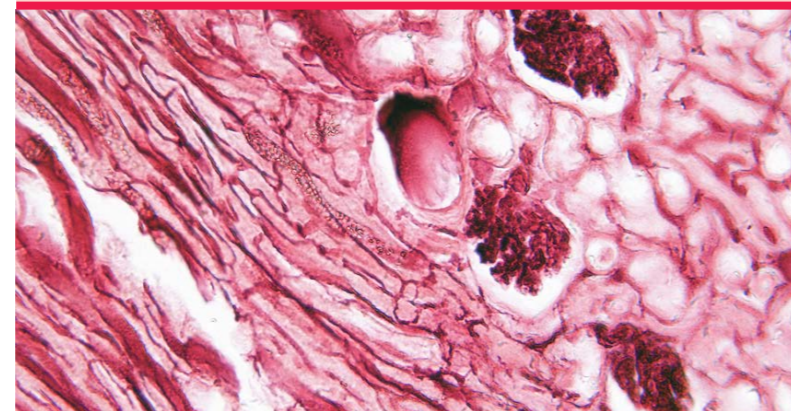


All disposable items soaked or dripping with blood or other body fluids

ANATOMICAL WASTE



Containers shall be labeled "Anatomical Waste" and shall be segregated from other red bag waste. Only single use packaging is approved for Anatomical Waste.



Biopsy Material

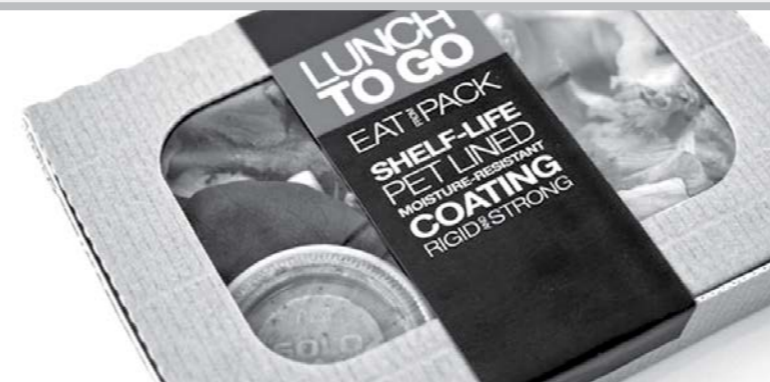


Anatomical Parts



Anatomical Organs

REGULAR WASTE



Food Packaging



Chux/underpads and disposable patient items



Non Infectious Gloves



Trash/wrappers

RECYCLABLE WASTE



Non-confidential paper



Sterile packaging



Plastic bottles and drink cans