

Chemosmart



MAKING HEALTHCARE SAFER
SOINS DE SANTÉ PLUS SÉCURITAIRES



The smarter way to manage cytotoxic waste

Choose Reusable

Daniels' revolutionary, reusable systems for trace cytotoxic waste set new standards in infection control, environmental effectiveness, logistical cost savings, and compliance.

CHEMOSMART KEY FEATURES

- ▶ Wide lid opening
- ▶ No plastic bags or cardboard boxes
- ▶ Leakproof body and lid seal
- ▶ Point-of-use positioning
- ▶ Wheeled or static mounting
- ▶ Foot-pedal operation
- ▶ Optimises segregation



Reusable and eco-friendly

The clinical appearance, distinct colour coding and clear labeling discourages incorrect waste disposal, reducing the likelihood of disposal premiums for general waste. In addition, workload on environmental services staff is reduced thanks to the compact design, ease of transportability and ability to locate collectors more effectively at point of waste generation. Daniels' reusable systems set a new standard in cost, safety and efficiencies of cytotoxic waste management.



Cost effective

Leading the way in compliance, the Daniels reusable Chemosmart solution is the first containment system in Canada to eliminate the need for plastic bags and cardboard boxes. This efficiency, and the elimination of disposable collectors, dramatically reduces overall cost and environmental impact. The eco-friendly Daniels Washsmart process uses a fully automated robotic washline, recycling water to minimise environmental impact, and achieving an unprecedented level of cleanliness and bacterial load reduction. Clear labelling and easily identifiable design encourages better waste segregation, resulting in fewer collector exchanges.

Can you afford to use another system?

CYTOTOXIC WASTE HANDLING

Industry Standard



1 Purchase a disposable cytotoxic sharps container



2 Assemble the disposable cytotoxic sharps container



3 Dispose of the cytotoxic sharps into the disposable container



4 When disposable container is full, close it, place it into a red bag, and seal it



5 Assemble a cardboard box



6 Place red bag into the cardboard box, seal it, and affix a Cytotoxic sticker



7 Transport cardboard boxes to storage area for pickup and disposal

CYTOTOXIC WASTE HANDLING

The Daniels Difference

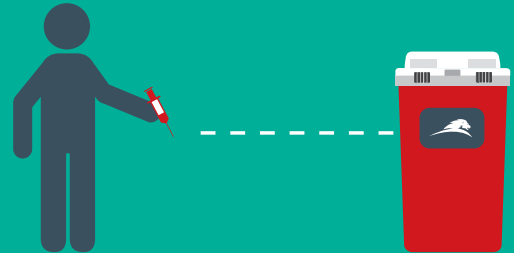
THREE EASY STEPS

1



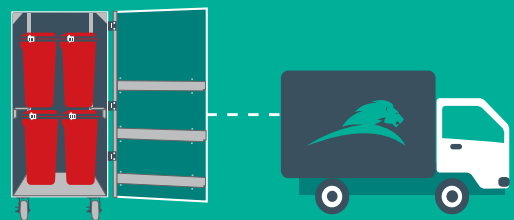
Wheel the pre-assembled collector to the point of generation of the cytotoxic waste

2



Dispose of cytotoxic sharps waste into the collector

3



When full, lock the collector and transport to storage for pickup and disposal



Chemosmart Regular

The thirteen safety-engineered features of the Chemosmart Regular collectors make them the safest cytotoxic sharps collection units in Canada. The Chemosmart is designed with in-built tamper-proof locks which, when engaged, can only be released at a Daniels processing facility. This eliminates the diversion risks associated with other cytotoxic sharps containers, preventing unauthorized access to the container's contents.

The Chemosmart Regular collector is designed for ultimate versatility. Its content-concealing safety tray restricts both visibility and hand-access to sharps. Understanding the varying healthcare environments and applications in which the collector may be deployed, Daniels Health have designed a range of lockable brackets and trolleys to navigate mounting and movement within an oncology setting, creating a security solution that extends beyond the collector itself.

Ideally suited to infusion bays and public access areas which facilitate point-of-care chemotherapy treatment.



STANDARD SIZES



CT14

HEIGHT: 285mm
WIDTH: 398mm
DEPTH: 210mm
FILL CAPACITY: 6.4 Litres
TOTAL CAPACITY: 14 Litres



CT22

HEIGHT: 446mm
WIDTH: 398mm
DEPTH: 210mm
FILL CAPACITY: 14.3 Litres
TOTAL CAPACITY: 22 Litres



CT32

HEIGHT: 618mm
WIDTH: 398mm
DEPTH: 210mm
FILL CAPACITY: 23.4 Litres
TOTAL CAPACITY: 32 Litres

Engineered tamper-proof locking

Engineered to precise tolerances, the patented Daniels Safety Tray prevents hand access to the collector during use, while also preventing overfilling by automatically engaging the tray mechanism into a locked position when contents reach the maximum fill line. Once full, the collectors' tamper-proof side locks are engaged to prevent unauthorised access to cytotoxic contents.

Chemosmart Access Plus

Designed for cytotoxic waste disposal in infusion bays or secure areas, the Access Plus range of Chemosmart collectors are best in class for cytotoxic waste disposal in secure environments. Engineered with the same in-built locking features of the Chemosmart Regular collectors, the Access Plus solves containment, transport and disposal risks of cytotoxic sharps waste in secure areas, and its accessible wide access geometry opening gives it greater versatility for sharps disposal.

Understanding the varying medical environments and applications in which the collector may be used, Daniels Health have designed a range of lockable brackets and trolleys to navigate mounting and movement within an oncology environment, creating a security solution that extends beyond the collector itself.

As a safety engineered device, the Access Plus Chemosmart protects contents through the complete cycle of containment, transport and destruction.



ACCESS PLUS SIZES



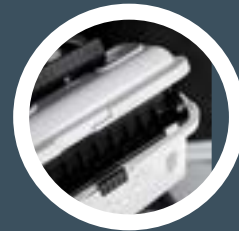
CT32

HEIGHT: 618mm
WIDTH: 398mm
DEPTH: 210mm
FILL CAPACITY: 23.4 Litres
TOTAL CAPACITY: 32 Litres



CT64

HEIGHT: 726mm
WIDTH: 398mm
DEPTH: 354mm
CAPACITY: 47 Litres
TOTAL CAPACITY: 64 Litres



WIDE OPENING

The optimal access geometry of the lid opening is designed with a wide aperture for safe disposal. This minimises disposal-related injuries and restricts hand access to the contained waste.

NO LEAKS

A fixed liquid seal around the rim of the collector lid eliminates leakage of cytotoxic fluids during transport. Container leakage is a common hazard with cytotoxic containers that are not equipped with a leakproof seal.

CANNOT BE REOPENED

Side locks are tamper-proof when engaged. This safety feature prevents unauthorised access to the collector contents.

MAXIMUM STRENGTH HARDENED PLASTIC

The medical grade hardened plastic casing of the Chemosmart collectors are completely impenetrable by sharp contents. The Chemosmart has been test-proven to an amazing 500 cycles, proving its durability, sterility and re-usability.

ELIMINATES OVERFILLING

Once the collector is full, the in-built safety tray is activated into an upright closed position to restrict access and overfilling, and alert the need for replacement.

Chemosmart Accessories

There are numerous accessory options available for the Daniels Cytotoxic collector range – all designed to improve your waste movement and efficiencies.

POSITION & MOVEMENT

Soft-Close Accessmart Trolley (with foot pedal)

With clean aesthetics, easy maneuverability, foot-pedal operation and a soft-close lid mechanism to reduce odour expulsion, the Soft-Close Accessmart Trolley is the smartest hands-free mobile solution for the CT64 Chemosmart.

Dimensions: H 36.3" x W 19.7" x D 18.8"

Order Code: 6006500000



Accessmart Mount Bracket

Designed to mount an S-Series sharps collector to the side of an Accessmart, this bracket can be positioned on either side of the trolley. Mounting screws supplied.

Dimensions: H 4.6" x W 10.2" x D 1.2"

Order Code: 4001916000



Static Floorstand (with foot pedal)

The Static Floorstand keeps the CT64 Chemosmart elevated off the ground in a fixed position. Hands-free operation is enabled via the foot pedal.

Dimensions: H 30.8" x W 16.4" x D 18.8"

Order Code: 5811000000



Dynamic Floorstand Kit

Wheel and Handle

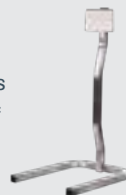
Order Code: 5810906000

64 Series Floorstand (without foot pedal)

Designed for static use, the 64 Series floorstand is compatible with the CT22, CT32 and CT64 collectors to optimise placement whilst elevating collectors off the ground.

Dimensions: H 25.3" x W 12" x D 14.6"

Order Code: 6424007000



Cartsmart 1 Trolley (without foot pedal)

Designed to optimise movement of the CT22 Chemosmart collector within patient environments, the Cartsmart trolley is adjustable in height to suit multiple sized collectors and accommodate height-restrictive spaces.

Dimensions: H 32.9" x W 17.1" x D 17"

Order Code: 6000100000



BULK DELIVERY

Small Internal Delivery Cart

The Small Internal Delivery cart is ideal for transporting up to 6 x CT64 collectors (3 on each side) and 5 smaller Chemosmart collectors between your loading dock and clinical areas.

Dimensions: H 56.9" x W 56" x D 34.25"

Order Code: 6002400000



Large Internal Delivery Cart

The Large Internal Delivery cart is ideal for transporting up to 8 x CT64 Chemosmart collectors (4 on each side) and 14 smaller Chemosmart collectors between your loading dock and clinical areas.

Dimensions: H 54.5" x W 74" x D 34.3"

Order Code: 6001900000



Optimized Waste Segregation

The Daniels point-of-use Accessmart trolley enables the safe and effective segregation of cytotoxic sharps waste. With hands free operation and easy maneuverability, the Accessmart enables the Chemosmart to be positioned in optimum use areas, while ensuring all sharps are safely disposed of at the point of care.



Cytotoxic Waste Segregation

Cytotoxic waste is defined by the Canadian Government as hazardous, and is mandated to be managed as biomedical waste.

Daniels Health offers disposal solutions for both cytotoxic sharps and other cytotoxic waste. So what's the difference?

CYTOTOXIC SHARPS WASTE



Waste includes:

- ▶ Needles/syringes used to administer cytotoxic medication
- ▶ Any other items capable of causing punctures or cuts that have come in contact with cytotoxic medication

Waste containment:

- ▶ Cytotoxic sharps must be collected in a red sharps container that is marked with a cytotoxic symbol.

OTHER CYTOTOXIC WASTE



Waste includes:

- ▶ Cytotoxic drugs and packaging
- ▶ Any items, other than sharps, that have come into contact with cytotoxic drugs (IV bags, tubing, gloves, gowns, etc.)
- ▶ Bodily fluids of patients receiving cytotoxic medication

Waste containment:

- ▶ Cytotoxic waste (other than sharps) must be collected in a cardboard box with a red liner, or in a red pail. A cytotoxic waste sticker must be affixed to the box/pail.

Provincial and Municipal regulations mandate that cytotoxic waste must be processed by incineration treatment only and that **approved collectors and liners** be utilised for disposal and transport.



We believe that sharps handling and waste management in hospitals is a **clinical responsibility** requiring a **clinical solution.**

Find out how the Daniels Difference can transform safety and infection control in your facility.

www.danielshealth.ca/daniels-difference



35+ years of experience in healthcare

Serving **20,000+** customers



Diverting **2,000+** tons of plastic from landfill per year



Preventing an estimated **4,000+** needlestick injuries per year



Daniels
MAKING HEALTHCARE SAFER
SOINS DE SANTÉ PLUS SÉCURITAIRES

www.danielshealth.ca