

DANIELS HEALTH

Logistics & Storage Solutions



MAKING HEALTHCARE SAFER
SOINS DE SANTÉ PLUS SÉCURITAIRES



WALL
MOUNTING
SOLUTIONS

Wall Mounting Solutions

Versatile space-optimising storage for clean and full collectors.

From patient environments to soiled utility rooms, Daniels wall mounted accessories provide obstruction-free access to collectors whilst ensuring minimal burden on valuable storage space. From our Wallsmart range which provide the perfect solution for the quick interchange of clean and full collectors, to our locking brackets which provide heightened security for pharmaceutical and high-risk wastestreams, Daniels mounting systems ensure collectors are always suspended, positioned for point-of-use accessibility and free from cross contamination.

Bulk Storage Solutions



Wallsmart Storage System – 29.5” Wide | Unique hook system that enables Sharpsmart collectors to be wall-mounted for efficient space utilisation within hospitals.

Dimensions : 70.9” (H) x 29.5” (W) x 1.8” (D)

Product Code : 4004806000

Compatibility : Holds 15 x S14; or 12 x S22; or 9 x S32; or 4 x 64-Series collectors, or a combination of various sizes.

Features : Modular system of panels can be arranged to suit different sized wall and storage areas.



Wallsmart Storage System – 44.1” Wide | Unique hook system that enables Sharpsmart collectors to be wall-mounted for efficient space utilisation within hospitals.

Product Code : 4002806000

Dimensions : 70.9” (H) x 44.1” (W) x 1.8” (D)

Compatibility : Holds 25 x S14, or 20 x S22; or 15 x S32; or 6 x 64-Series collectors, or a combination of various sizes.

Features : Modular system of panels can be arranged to suit different sized wall and storage areas.



Wallsmart Mini Panel | A wall mounted system for holding up to 3 Sharpsmart collectors.

Product Code : 4017700000

Dimensions : 6.0” (H) x 26.5” (W) x 1.5” (D)

Compatibility : S14, S22, S32 Regular and Access Plus collectors.

Features : Unique hook system enables collectors to be suspended from the ground at a safe and easily accessible height.

Did you know...

All Daniels Accessories can be viewed on www.danielshealth.ca with an easy cart option to submit an online quote request.





Single Collector Solutions



Standard Wall Bracket | Universal bracket enabling wall mounting of Daniels S-Series collectors.

Product Code : 4040000000

Dimensions : 3.3" (H) x 4.9" (W) x 1.1" (D)

Compatibility : S14, S22 and S32 regular sizes.

Features : Bracket kit comes with screws and hole-plugs.



Accessplus Wall Bracket (S-series) | Designed for wall mounting of the SharpSmart Access Plus range to allow 90-degree lid opening.

Product Code : 4000207000

Dimensions : 4.7" (H) x 6.6" (W) x 3.4" (D)

Compatibility : S14, S22 and S32 Access Plus sizes.

Features : Plastic/metal construction is lightweight, has long-lasting durability and is easy to clean.



A

Locking Wall Bracket | For use in areas where secure, key lock mounting of SharpSmart collectors is required.

Product Code : **A** 4008507000 - Left Side Lock | **B** 4008607000 - Right Side Lock

Dimensions : 4.8" (H) x 13.9" (W) x 1.4" (D)

Compatibility : S14, S22 and S32 regular sizes.

Features : Unique key lock enables secure locking of collectors to the bracket.



B



S2 Bench/Wall Bracket | Stabilises S2 disposable collectors upright on bench tops.

Product Code : 1025000000

Dimensions : 3.5" (H) x 2.1" (W) x 3.6" (D)

Compatibility : S2 Container range.

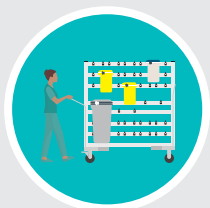
With 32 years experience leading innovative change in the management of healthcare waste across six countries, at Daniels

WE THINK DIFFERENTLY.



We have come to understand that safety, segregation and the effective cost management of healthcare waste is driven and directly influenced from within the four walls of a clinical facility... so why not start there?

Daniels have invested years of microbiological R&D and clinical research into creating products that amplify the safety and efficiencies of a healthcare environment. We don't just deal with a collector, we look at how it's mounted and secured, how it positions waste for optimal segregation and minimises footprint in space-constrained areas; we look at how it moves through a facility in a way that is almost invisible,...



MOVEMENT

Challenge - Pressure on service elevators shared by patients and hospital staff.

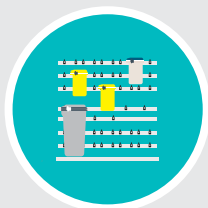
Solution - By transporting 16 collectors on a Daniels Internal Delivery Cart, you can dramatically reduce labour time and burden on elevators.



SEGREGATION

Challenge - Achieving effective segregation within a patient room.

Solution - Daniels Accessmart trolley enables co-mounting of a Sharpsmart and Medismart collector to achieve point-of-use segregation.



WALL MOUNTING

Challenge - Small utility room with limited floorspace.

Solution - Install Wallsmart to efficiently store multiple collectors.



TROLLEY MOUNTING

Challenge - Safe effective disposal of medications in a patient environment.

Solution - Daniels brackets can be mounted directly onto a hospitals' med-cart to safely move Pharmasmart collectors from room to room.



DOCK STORAGE

Challenge - Double-stacking biomedical waste bins is an occupational hazard and takes up significant space in a loading dock.

Solution - Daniels transporters store up to 45 collectors in a secure, dust-free environment with minimal footprint required.

